



GMT MONTHLY MEMBERSHIP PROGRESS REPORT

Results as of: 5/31/2019

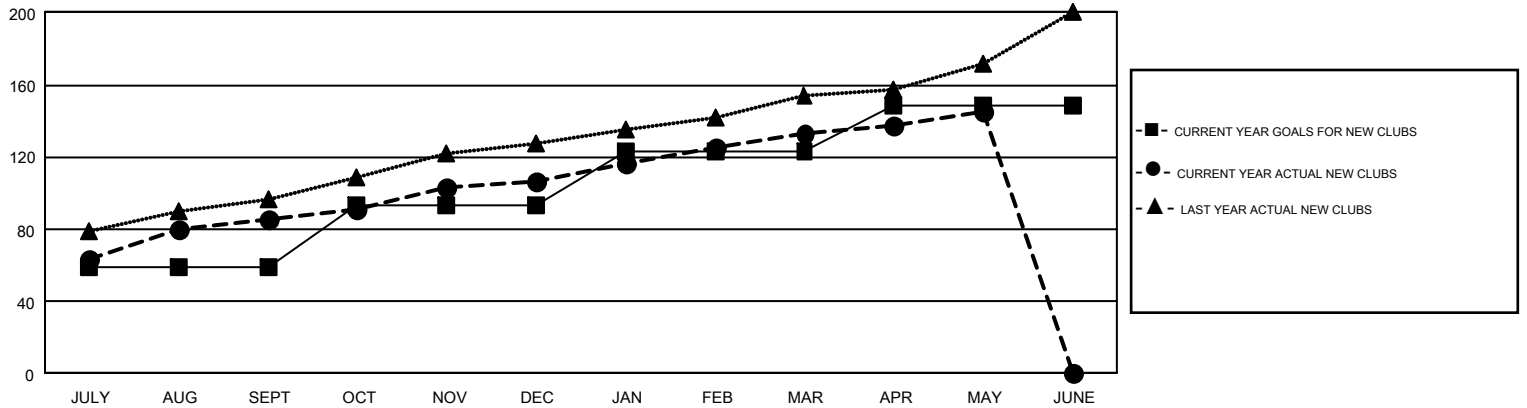
GMT Constitutional Area 6, Group F

GMT: N S SANKAR

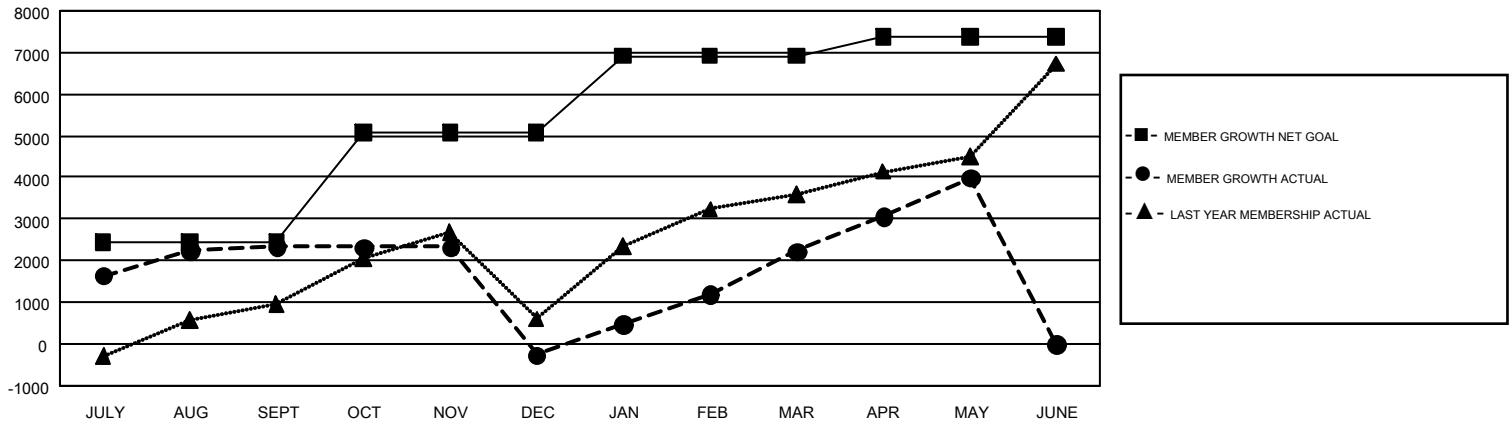
REPORT DOES NOT INCLUDE CLUBS IN UNDISTRICTED AREAS.

Clubs				Members			
RESULTS FOR 2018-2019				RESULTS FOR 2018-2019			
QUARTER	NEW CLUB GOAL	NEW CLUBS	DROPPED CLUBS	QUARTER	MEMBER GROWTH NET GOAL	MEMBER GROWTH ACTUAL	DROPPED MEMBERS ACTUAL (including transfers)
JULY/AUG/SEPT	59	86	10	JULY/AUG/SEPT	2,448	5,064	2,279
OCT/NOV/DEC	34	21	66	OCT/NOV/DEC	2,630	1,863	4,353
JAN/FEB/MAR	30	26	8	JAN/FEB/MAR	1,832	4,209	1,125
APR/MAY/JUNE	25	12	2	APR/MAY/JUNE	477	4,031	2,133

GOALS AND ACTUAL NEW CLUBS CUMULATIVE



GOALS AND ACTUAL MEMBERS CUMULATIVE



DROPPED CLUBS: 86	1,429 CLUBS OF 2,246 ADDED 1 OR MORE NEW MEMBERS	GENDER DISTRIBUTION MALE 73,516 (78.77%) FEMALE 19,811 (21.23%)
DROPPED MEMBERS DECEASED 240 CLUB CANCELLED 1,856 OTHER 7,793 <hr/> TOTAL 9,889	CLICK HERE FOR CUMULATIVE MEMBERSHIP DATA	TOTAL FAMILY UNIT MEMBERS 34,973 FAMILY MEMBERS PAYING HALF DUES 20,819